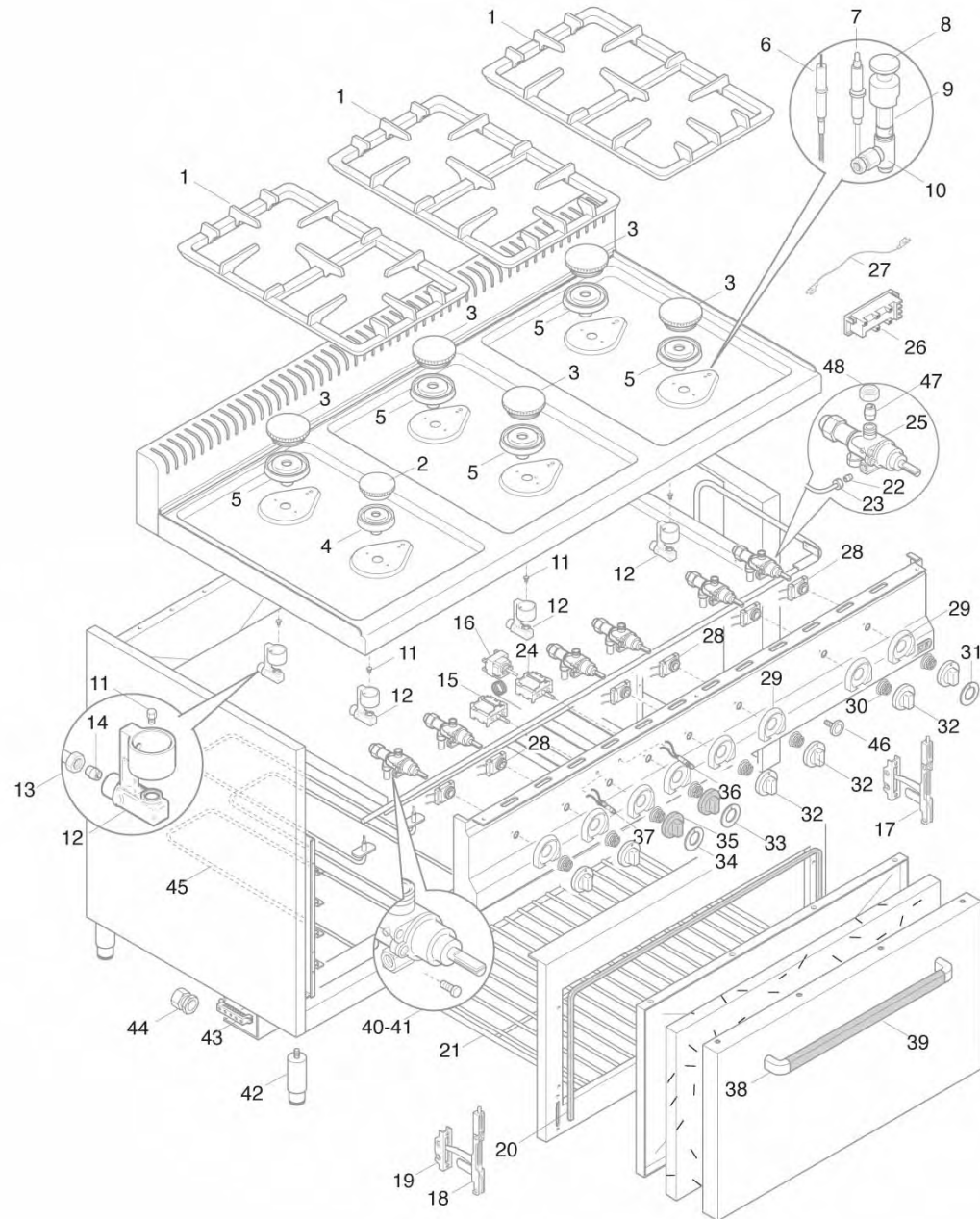




G7F4PW+FE





G7F4PW+FE

Pos. Item	Codice Code	Descrizione	Item Description	Designation articles	Artikelbeschreibung	Decripción artículos	N° pezzi - No. pieces					
1	31856700	Griglia smaltata rough e	enamelled grill rough ev	Grille ÉmailÉe rough ev	Emaillierter rost rough ev	Parrilla esmaltada rough ev						2
2	31283300	Spartifiamma r. cuc.'pw' s.700	Spartifiamma r. cuc.'pw' s.700	Spartifiamma r. cuc.'pw' s.700	Spartifiamma r. cuc.'pw' s.700	Spartifiamma r. cuc.'pw' s.700						1
3	31283600	Spartifiamma u.r. cuc.'pw' s.7	Spartifiamma u.r. cuc.'pw' s.7	Spartifiamma u.r. cuc.'pw' s.7	Spartifiamma u.r. cuc.'pw' s.7	Spartifiamma u.r. cuc.'pw' s.7						3
4	31283800	Corpo bruciatore 'r' pw+ae	Burner body 'r' pw+ae	Corps bruleur 'r' pw+ae	Brenner koerper 'r' pw+ae	Cuerpo quemador 'r' pw+ae						-
4	31283200	Corpo bruciatore 'r' pw	Burner body 'r' pw	Corps bruleur 'r' pw	Brenner koerper 'r' pw	Cuerpo quemador 'r' pw						1
5	31283900	Corpo bruciatore ur cucine pw+	Burner body 'ur' pw+ae	Corps bruleur 'ur' pw+ae	Brenner koerper 'ur' pw+ae	Cuerpo quemador 'ur' pw+ae						-
5	31283500	Corpo bruciatore 'ur' pw	Burner body 'ur' pw	Corps bruleur 'ur' pw	Brenner koerper 'ur' pw	Cuerpo quemador 'ur' pw						3
6	31187800	Candel.acc.cuc.el=600 molla	Ignition plug electr. cookers	Bougie d'allumage fourneaux el	Zundkerze el=60	Bujia de encendido cocinas ele						-
7	31289200	Termocoppia 750 mm cucina e	Thermocouple 750mm	Thermocouple 750mm	Thermoelemnt 750mm	Termopar 750mm						-
7	31288300	Termocoppia 600mm cuc.'pw' s.7	Termocoppia 600mm cuc.'pw' s.7	Termocoppia 600mm cuc.'pw' s.7	Termocoppia 600mm cuc.'pw' s.7	Termocoppia 600mm cuc.'pw' s.7						4
8	24292000	Cappello pilota cuc.'pw' s.700	Cappello pilota cuc.'pw' s.700	Cappello pilota cuc.'pw' s.700	Cappello pilota cuc.'pw' s.700	Cappello pilota cuc.'pw' s.700						4
9	22993700	Venturi pilota cuc.'pw' s.700	Venturi pilota cuc.'pw' s.700	Venturi pilota cuc.'pw' s.700	Venturi pilota cuc.'pw' s.700	Venturi pilota cuc.'pw' s.700						4
10	24291600	Corpo pilota cuc.'pw' s.700 sp	Corpo pilota cuc.'pw' s.700 sp	Corpo pilota cuc.'pw' s.700 sp	Corpo pilota cuc.'pw' s.700 sp	Corpo pilota cuc.'pw' s.700 sp						4
11	40000000	Ugello: indicare modello e tip	Injector: specify model and ga	Gliceur: specifier modele et g	Duese: modell und gas-typ zeig	Tobera: precisar modelo y tipo						1
12	32328000	Portaugello cuc.'pw' s.700	Portaugello cuc.'pw' s.700	Portaugello cuc.'pw' s.700	Portaugello cuc.'pw' s.700	Portaugello cuc.'pw' s.700						4
13	32811600	Dado arc premibicono d.10 cuc.	Dado arc premibicono d.10 cuc.	Dado arc premibicono d.10 cuc.	Dado arc premibicono d.10 cuc.	Dado arc premibicono d.10 cuc.						4
14	32777200	Bicono arc per tubo d.10	Bicono arc per tubo d.10	Bicono arc per tubo d.10	Bicono arc per tubo d.10	Bicono arc per tubo d.10						4
15	22049800	Commutatore per fe 2/1-cpe40/e	Selector - cpe40/e9cp40	Commutateur - cpe40/e9cp40	Umschalter - cpe40/e9cp40	Conmutador - cpe40/e9cp40						1
16	30064900	Termostato trif.270Ø x fe 2/1	Thermostat 270Ø - fe 2/1	Thermostat 270Ø - fe 2/1	Thermostat 270Ø - fe 2/1	Termostato 270Ø - fe 2/1						1
16	22069700	Termostato trif.sicur.fry-top	Security thermostat	Thermostat de surete	Sicherheitthermostat	Termostato de seguridad						1
17	22608100	Cerniera dx x fe1/fg1 fcd8-fsd	Right hinge	Charniere droite	Scharnier rechts	Bisagra derecha						1
18	22607800	Cerniera sx x fe1/fg1 fcd8-fsd	Left hinge	Charniere gauche	Scharnier links	Bisagra izquierda						1
19	22608200	Cern.fissa portarullino fe1fg1	Fixed hinge	Charniere fixe	Festes scharnier	Bisagra fija						2
20	22594200	Rubinetto x nuova microcat. by	Oven seal fg1-fe1 700/900	Joint four fg1-fe1 700/900	Dichtung backofen fg1-fe1 700/	Empaquetadura horno fg1-fe1 70						1
21	31856800	Grc 2/1 gn - griglia forno cuc	Grc 2/1 gn-cooker oven grill	Grc 2/1 gn-grille four	Grc 2/1 gn- backofen-rost s.70	Grc 2/1 gn-parrilla horno						1
22	31777700	Bicono d. 4 per rubinetto 21s	Double cone for tap 21s	Bicone pour robinet 21s	Doppelkegel fur hahn 21s	Doble cono para llave de paso						4
23	31924700	Raccordo per tubo diam. 4 mm	Pipe fitting Ø4 mm	Raccord pour tuyau Ø4 mm	Anschluss fur rohr Ø4 mm	Racor para tubo Ø4 mm						4
24	22050300	Interr. quadrip. fry-top/700;	Switch	Interrupteur	Schalter	Interruptor						1
25	31273700	Rubinetto pel21s;9x1;bypas100	Cock pel 21/s	Robinet pel 21/s	Hahn pel 21/s	Llave pel 21s						4
25A	22966200	Briglia fissaggio rubinetto	Fixing tap clamp	Bride de fixation robinet	Bugel fur hahnbefestigung	Fiador ajuste llave de paso						-
25	31275000	Rubinetto x nuova microcat. by	Tap by-pass 52	Robinet by-pass 52	Hahn by-pass 52	Llave de paso by-pass 52						-
26	31003000	Generatore elettr. 220/240v '6	Electr. generator 220/240v '6u	GÉnÉrateur Électr. 220/240v '6	Elektri. generator 220/240v '6	Generador elÉctrico 220/240v '						-
26	31002800	Generatore elettr. 220/240v '4	Electr. generator 220/240v '4u	GÉnÉrateur Électr. 220/240v '4	Elektri. generator 220/240v '4	Generador elÉctrico 220/240v '						-
27	22190000	Cavo colleg. acc. ele. cucine	Connecting cable for ele. igni	CÂble de conn. pur allumage ÉI	Verbindungskabel	Cable de conexiÓn						-
28	31877600	Microcaten. 4f cuc. e nuova	Catenary microswitch 6ring coo	Micro-interrupteur 6f cuisinie	Mikroschalter 4f kochmulden -	Micro catenaria 4f cocinas - n						-
28	31877800	Microcaten. 6f cuc. e	Catenary microswitch 6ring coo	Micro-interrupteur 6f cuisiniÉ	Mikroschalter 6f kochmulden	Micro catenaria 6f cocinas						-
29	35954800	Sottomanopola rossa attr.gas	Red sub-knob gas equipment	Sous-manette rouge equip.gas	Rote unterknopf gaseinricht.	Sub-mando rojo equipos gas						4
29A	35954900	Sottomanopola rossa attr. el.	Sottomanopola rossa attr. el.	Sottomanopola rossa attr. el.	Sottomanopola rossa attr. el.	Sottomanopola rossa attr. el.						2
30	35880200	Molla sottomanopola	Spring for sub-knob	Ressort sous-manette	Unterknopf feder	Muelle sub-mando						4
31	31952200	Serig.rossa manop.gas plg-cpg-	Red gas knob serigraphy	Serigraphie rouge manette	Rote drehknoptsferigraphie	Serigrafia roja mando						4



G7F4PW+FE

Pos. Item	Codice Code	Descrizione	Item Description	Designation articles	Artikelbeschreibung	Decripción artículos	N° pezzi - No. pieces					
32	35877100	Manopola rossa p. 8x6,5 a 180°	Red knob p. 8x6,5 a 180°ral300	Manette rouge p. 8x6,5 a 180°	Drehknopf p. 8x6,5 a 180°ral30	Mando rojo p. 8x6,5 a 180°ral3						4
33	31953500	Serig.rossa manop.frytop/forno	Knob serigraphy	Serigraphie manette	Drehknopfserigraphie	Serigrafia mando						1
34	31952600	Serig.rossa manop.forno el.mul	Electric knob serigraphy	Serigraphie manette electr.	Drehknopfserigraphie	Serigrafia mando electr.						1
35	35877600	Man. rossa p.6x4,6 a 180° dist	Red knob p. 6x4,6 a 180°	Manette rouge p.6x4,6 a 180°	Drehknopf p.6x4,6 a 180°	Mando rojo p.6x4,6 a 180°						2
36	30168500	Spia arancio 230v d.10mmt150Ø	Orange lamp 230v	Temoin lumineux orange 230v	Orange kontrollampe 230v	Piloto naranja 230v						1
37	30168800	Spia verde 230v d.10mmt150Ø	Green lamp 230v	Temoin lumineux vert 230v	Grune kontrollampe 230v	Piloto verde 230v						1
38	31979000	Terminale crom.lucido plastica	Chromium-plated terminal	Terminal chromE poli	Verchromte grifendverschluss	Terminal cromado lustroso						2
39	31874000	Maniglia sez.ovale aisi 304 42	Handle aisi 304 425 x 41	Poignee aisi 304 425 x 41	Griffe aisi 304 425 x 41	Asa aisi 304 425 x 41						1
40	22783500	By-pass 45 x rubin. pel20/21s	By-pass 45 for tap pel20/21s	By-pass 45 pour robinet pel20/	By-pass 45 fur hahn pel20/21s	By-pass 45 para pel20/21s						1
41	22783600	By-pass 55 x rubin. pel20/21s	By-pass 55 for tap pel20/21s	By-pass 55 pour robinet pel20/	By-pass 55 fur hahn pel20/21s	By-pass 55 para pel20/21s						3
42	24684200	Piedino inox 1 1/2 h-125/175	Foot 1 1/2 h-125/175	Pied 1 1/2 h-125/175	Fuss 1 1/2 h-125/175	Pata 1 1/2 h-125/175						4
43	25185100	Kit morsettiera 10 mmq	Terminal board 10 mmq	Bornier 10 mmq	Klemmenleiste 10 mmq	Bornera 10 mmq						1
44	31186500	Pressacavo pg21 bimed e7p4 fe	Cable clamp	Serre-cable	Kabelklemme	Sujeta-cable						1
45	31320000	Resistenza superiore 990w 240v	990w 240v higher heating elem	RÉsistance superieur 990w 240v	Oberer widerstand 990w 240v	Resistencia superior 990w 240v						3
45A	31320400	Resistenza inferiore 1500w 240	1500w 240v lower heating eleme	RÉsistance infÉrieure 1500w 24	Unteres widerstand 1500w 240v	Resistencia inferior 1500w 240						3
46	32583800	Chiusura magnetica	Magnetic closure	Fermeture magnetique	Magnetverschluss	Cierre magnetico						-
47	32777300	Bic.ottone d.10	Double cone d.10	Bicone d.10	Doppelkegel d.10	Doble cono d.10						8
47	31777800	Bic.ottone d.8 per evol./fg1	Brass double cone d.8	Bicone en laiton d.8	Messinge doppelkegel d. 8 fuer	Doble cono en laton d.8						-
48	31817500	Raccordo x bicono d.8 rub.e	Double-cone fitting d.8	Raccord pour bicone d.8	Anschl. fur doppelkegel d.8	Racor para doble cono						-
48	32811800	Dado d. 10-m 16 gl/lx-plg-cpg	Nut d. 10-m 16 gl/lx-plg-cpg	Ecrou d. 10-m 16 gl/lx-plg-cpg	Mutter d. 10-m 16 gl/lx-plg-cp	Tuerca d. 10-m 16 gl/lx-plg-cp						8